

ALWAYS A PERFECT CONNECTION

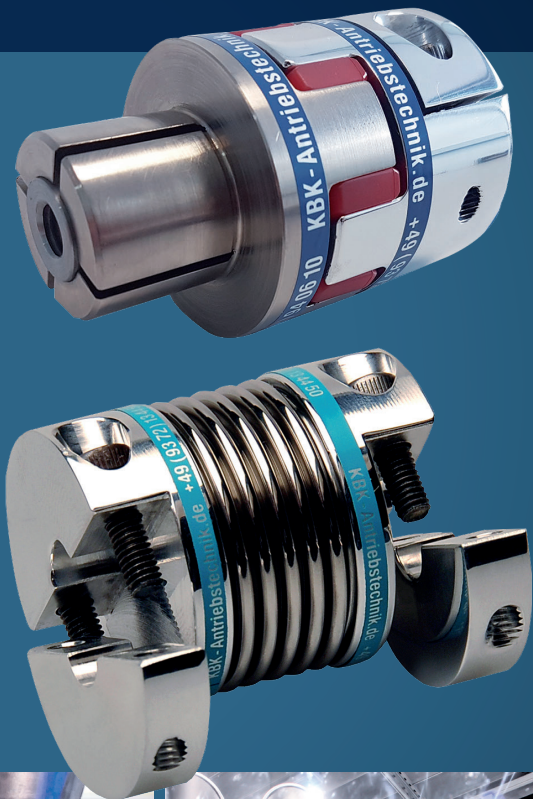
KBK offers the ideal coupling for each task of automation

No matter whether for food production, tooling machines or photovoltaic systems: couplings are an indispensable component in several fields of application. The drive technology specialist KBK produces these machine components in numerous versions and sizes. "We offer the optimum coupling solution for each field of automation", says Sven Karpstein, the managing director of KBK.

For the use in high dynamic feed axis in tooling machines, the torsion-resistant, flexible and fatigue durable metal bellow couplings are the ideal choice. Even the highest torques can be transmitted absolutely backlash free and have very low restoring forces. The servo insert couplings by KBK are also very suitable for the use in tooling machines: They compensate any misalignment, absorb vibrations effectively and are axially pluggable. KBK provides this type of coupling for shaft diameters from 2 mm up to 60 mm and torque ranges from 0.5 Nm to 525 Nm.

Another application area for servo insert couplings is the two-axle tracking system in photovoltaic systems. Owing to its compact design, the KBE4 easily fits in the confined space of the plant. It offers torques from 12.5 to 325 Nm and is available for shaft diameters from 4 to 45 mm.

All types of couplings by KBK are also available in stainless steel. These versions are especially suitable for the use in the food industry and packaging systems.



KBK ANTRIEBSTECHNIK GMBH

Unterlandstrasse 46 | 63911 Klingenberg am Main | Tel.: +49 9372 94061-0
info@kbk-antriebstechnik.de | www.kbk-antriebstechnik.de

