



## System Technology for Drive and Automation

The most important components and their possible combinations

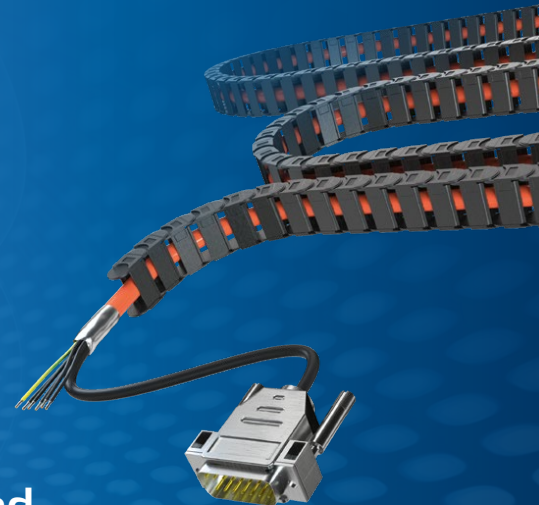


**STÖBER**

[www.stober.com](http://www.stober.com)

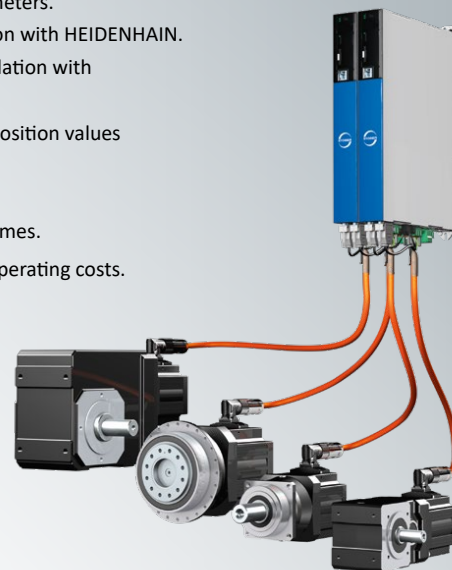
Connected  
at a distance

With *One Cable*  
up to 100 meters



Advance to the next level: The new STÖBER hybrid cable connects the motor and drive controller up to 100 meters. With future-proof HEIDENHAIN EnDat® 3. For maximum quality during transmission, diagnosis, safety and performance. Ideal for digital production.

- Guaranteed trailing ability without chokes for cable lengths up to 50 meters.
- Developed in cooperation with HEIDENHAIN.
- Automatic system installation with electronic nameplate.
- Digital transmission of position values and sensor data.
- Low cabling effort.
- Shortened installation times.
- Reduced material and operating costs.

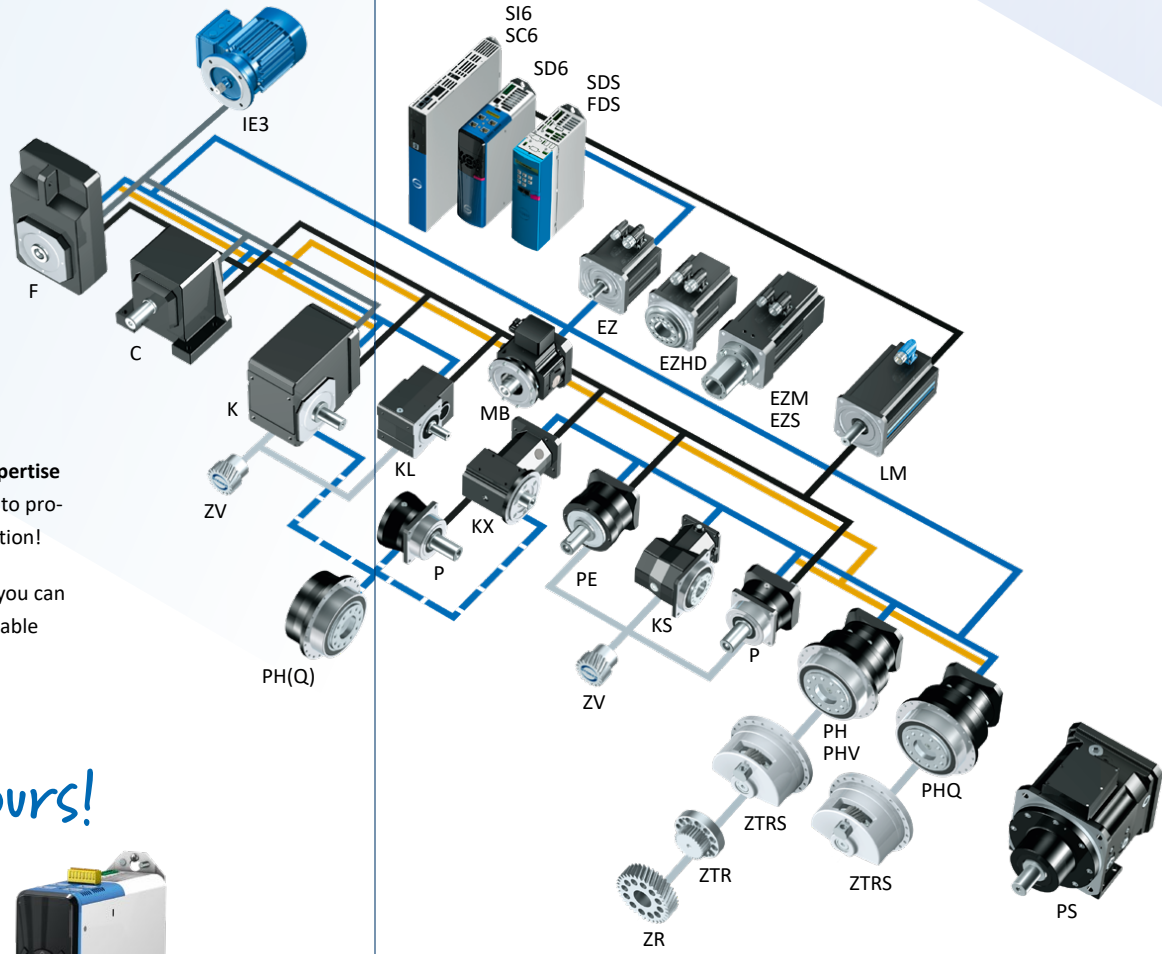


## Everything from a single source.

The STOBER drive system consisting of gear units, motors, cables and drive controllers has a modular design and is freely scalable – for tailor-made, compact and powerful machine concepts. It can therefore be adapted to your individual requirements and combined as needed in nearly all industries and application areas.

Take advantage of the multi-industry expertise of our application engineers. We're glad to provide you support for your specific application!

With our intuitive **product configurator**, you can easily filter, compare, save and share suitable drive solutions.



*Make it yours!*

[configurator.stober.com](http://configurator.stober.com)



**„It is our vision to be the preferred partner for perfect motion.“**

– Andreas Thiel,  
Chief Executive Officer STOBER.

## One partner. All the possibilities.



„We put ideas in motion with passion and a great deal of dedication. In the process, we rely on our decades of experience and an exceptionally broad range of products. Our customers benefit from precise, practical system solutions with uncompromising quality and expert individual consultation.““

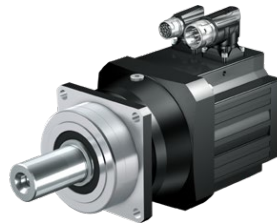
– Patrick Stöber,  
Chief Executive Officer STÖBER



### PH, PHQ Planetary Geared Motor

Acceleration torque: 24 – 22000 Nm  
Backlash: 1 – 4 arcmin

**Quattro power for maximum power density.**



### P Planetary Geared Motor

Acceleration torque: 11 – 3450 Nm  
Backlash: 1 – 8 arcmin

**For high precision and smooth operation.**



### PE Planetary Geared Motor

Acceleration torque: 11 – 250 Nm  
Backlash: 8 – 10 arcmin

**The helical gearing economy variant.**

## Low-backlash planetary gear units.

For  $\mu\text{m}$ -precise positioning and maximum torsional stiffness. The high housing and gearing quality ensures high acceleration torques and also the highest running accuracy.

All planetary gear units and right-angle planetary gear units can be combined with motors of the EZ and LM series.

## Need special solutions?

Numerous one-of-a-kind product highlights and project-related adjustments make it possible. With a holistic approach to your specific task, we work together on individualized solutions that are optimally coordinated to your requirements. Dedicated and solution-oriented in the support of your visions and projects.

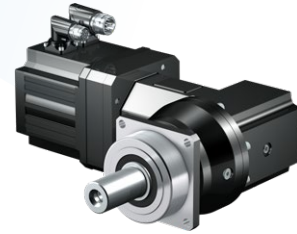
**Contact us: +49 7231 582-3060 | [systemsupport@stoeber.de](mailto:systemsupport@stoeber.de)**



### PH(Q)K, PHKX Right-Angle Planetary Geared Motor

Acceleration torque: 26 – 43000 Nm  
Backlash: 1 – 6 arcmin

**Quattro power for small installation spaces.**



### PK, PKX Right-Angle Planetary Geared Motor

Acceleration torque: 11 – 3300 Nm  
Backlash: 1.5 – 8.5 arcmin

**High precision for small installation spaces.**



### KS Helical Bevel Geared Motor

Acceleration torque: 27 – 400 Nm  
Backlash: 4 – 6 arcmin

**Strong. Stable. With highest possible power density.**

## Compact directly attached geared motors.

Save costs and benefit from a lower mass inertia, higher dynamics and increased efficiency at the same time.

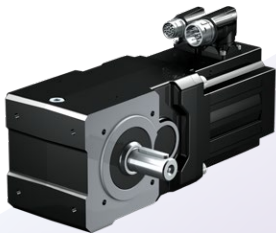
**Gear Units**  
**Geared Motors**  
**Motors**  
**Cabels and Drive Controllers**



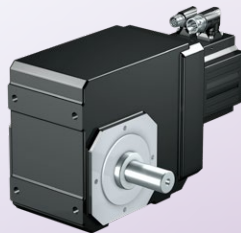
**C Helical Geared Motor**  
 Acceleration torque: 9.7 – 6500 Nm  
 Backlash: 10 – 20 arcmin  
**The classic with helical gearing.**



**F Offset Helical Geared Motor**  
 Acceleration torque: 21 – 1100 Nm  
 Backlash: 5 – 11 arcmin  
**High positioning accuracy and backlash stability.**



**KL Helical Bevel Geared Motor**  
 Acceleration torque: 11 – 65 Nm  
 Backlash: 16 – 25 arcmin  
**Elegant. Dynamic. Completely without offset.**



**K Helical Bevel Geared Motor**  
 Acceleration torque: 23 – 13200 Nm  
 Backlash: 1.5 – 12 arcmin  
**Versatile. Compact. For exceptional backlash stability.**

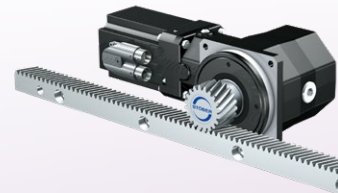
**Rack and Pinion drives with Synchronous Servo Motors.**

Featuring the highest gearing quality and power density for designing precise and dynamic machines.

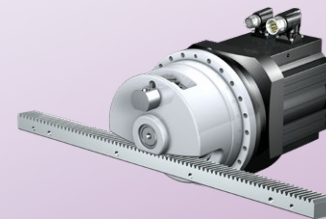
All pinion designs are available in combination with STÖBER planetary gear units, and the ZV series can also come with helical bevel gear units. You benefit from extremely compact, highly dynamic drive solutions.



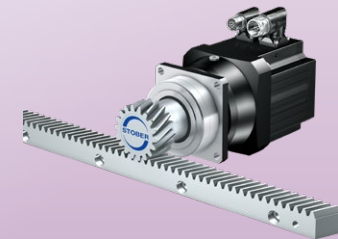
**ZTRPH, ZTRPHV Rack and Pinion Drives with Servo Motors**  
 Module: 2 – 8 mm  
 Feed force: 1.9 – 67 kN  
 Feed velocity: 0.1 – 4 m/s  
**High performance for demanding drive concepts.**



**ZVKS Rack and Pinion Drive with Servo Motor**  
 Module: 2 – 4 mm  
 Feed force: 1.3 – 11 kN  
 Feed velocity: 0.08 – 3 m/s  
**High flexibility for automation and robotics.**



**ZTRSPH, ZTRSPHQ, ZTRSPHV Rack and Pinion Drives with Servo Motors**  
 Module: 2 – 10 mm  
 Feed force: 2.8 – 126 kN,  
 Feed velocity: 0.12 – 4 m/s  
**High force for maximum power density.**



**ZVP Rack and Pinion Drive with Servo Motor**  
 Module: 2 – 4 mm  
 Feed force: 0.8 – 11 kN,  
 Feed velocity: 0.1 – 4.5 m/s  
**High precision for typical servo applications**

## High-performance drive controllers.

Tailor-made for any kind of drive task and with multiple certified safety functions – for the reliable protection of operator and machine.



### SD6 Drive Controller

Powerful stand-alone drive controller that can be custom configured. Optimized for drive-based applications in synchronous operation with up to 8 axes. Available as a single-axis controller in 4 sizes with a nominal output current up to 85 A.



### S16 Drive Controller (Multi-Axis Drive System)

Compact drive controller for drive control in a multi-axis drive system. Optimized for controller-based multi-axis applications (> 4 axes). Available in 4 sizes as single or double-axis controller with a nominal output current up to 50 A.



### SC6 Drive Controller

Compact stand-alone drive controller for sensorless control of STOBER LeanMotors of the LM series. Optimized for drive-based applications with 2 to 4 axes. Available in 3 sizes (as single or double-axis controller) with a nominal output current up to 19 A.



### EZM Synchronous Servo Motor for Screw Drives

Nominal torque – motor: 3.65 – 14.7 Nm  
Stall torque – gear unit output: 4.25 – 18.9 Nm  
**For threaded nuts with flange.**



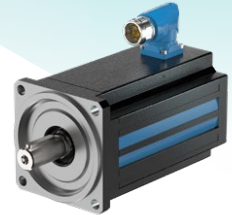
### EZ Synchronous Servo Motor

Highest volume output. High torque. High dynamics.  
Stall torque: 0.95 – 94 Nm  
**Extremely compact**



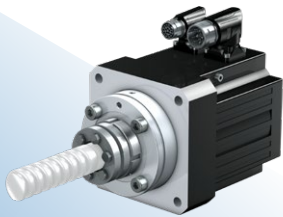
### STOBER One Cable Solution (OCS)

The STOBER hybrid cable connects motor and drive controller up to 100 meters. For maximum quality during transmission, diagnosis, safety and performance.  
**With future-proof HEIDENHAIN EnDat® 3.**



### LM Lean Motor

Electric drive without encoder with just one standard power cable. Fanless. Speed accuracy  $\pm 1\%$ ,  $\eta$  up to 96 %, Positioning accuracy  $\pm 1^\circ$ , Stall torque: 2.43 – 29.8 Nm  
**Precise and compact, robust and strong**



### EZS Synchronous Servo Motor for Screw Drives

Nominal torque – motor: 3.85 – 23.7 Nm  
Stall torque – gear unit output: 4.3 – 27.7 Nm  
**For rotating threaded spindles.**



### EZHD Synchronous Servo Motor with Hollow Shaft

Super compact with extremely high power density.  
Stall torque: 2.6 – 31.1 Nm  
**For high axial forces**



## Bridge the Gap.

With the encoderless Lean motor, STOBER has launched a compact solution that is lighter, smaller and – with IE5 classification – more energy-efficient than an asynchronous motor while delivering the same power. And it is also cheaper and more rugged than a standard servo motor.

## At home in the world of demanding motion.

STOBER has developed and produced excellent drive technology since 1934 and is active internationally at 14 locations.

As a family-owned company, close relationships are extremely important to us. We build relationships with our employees and customers based on trust.

With STOBER, you gain a partner who makes a large contribution to achieving your goals:

- Increased efficiency and productivity.
- Reduced manufacturing costs.
- Fail-safe operation and constant machine availability.
- Precision, positioning accuracy, and smooth operation.
- Maximum dynamics in a reduced installation space.
- Flexibility in design.
- High efficiencies.
- Machine safety.
- Maintenance-free.
- Energy efficiency and sustainability.



### STOBER Service

The STOBER service network includes 38 trusted partners in Germany. They guide you through commissioning, available on-site in case of faults and offer expert technical advice.

### Service Hotline +49 7231 582-3000

The STOBER service specialists can be reached around the clock and if needed, they can be on-site quickly. Thanks to their experience, they are often able to guide your employees through suitable immediate measures over the phone.

### STOBER Service Network

The STOBER INTERNATIONAL SERVICE NETWORK offers worldwide support and service. It includes over 80 top-performing service partners in over 40 countries.

### STOBER AUSTRIA

www.stoeber.at  
+43 7613 7600-0  
sales@stoeber.at

### STOBER CHINA

www.stoeber.cn  
+86 10 6590 7391  
sales@stoeber.cn

### STOBER FRANCE

www.stober.fr  
+33 4 78.98.91.80  
sales@stober.fr

### STOBER GERMANY

www.stoeber.de  
+49 7231 582-0  
sales@stoeber.de

### STOBER ITALY

www.stober.it  
+39 02 93909570  
sales@stober.it

### STOBER JAPAN

www.stober.co.jp  
+81 3 5395 6788  
sales@stober.co.jp

### STOBER SWITZERLAND

www.stoeber.ch  
+41 56 496 96 50  
sales@stoeber.ch

### STOBER TAIWAN

www.stober.tw  
+886 2 2216 3428  
sales@stober.tw

### STOBER TURKEY

www.stober.com  
+90 216 510 2290  
sales-turkey@stober.com

### STOBER UK

www.stober.co.uk  
+44 1543 458 858  
sales@stober.co.uk

### STOBER USA

www.stober.com  
+1 606 759 5090  
sales@stober.com